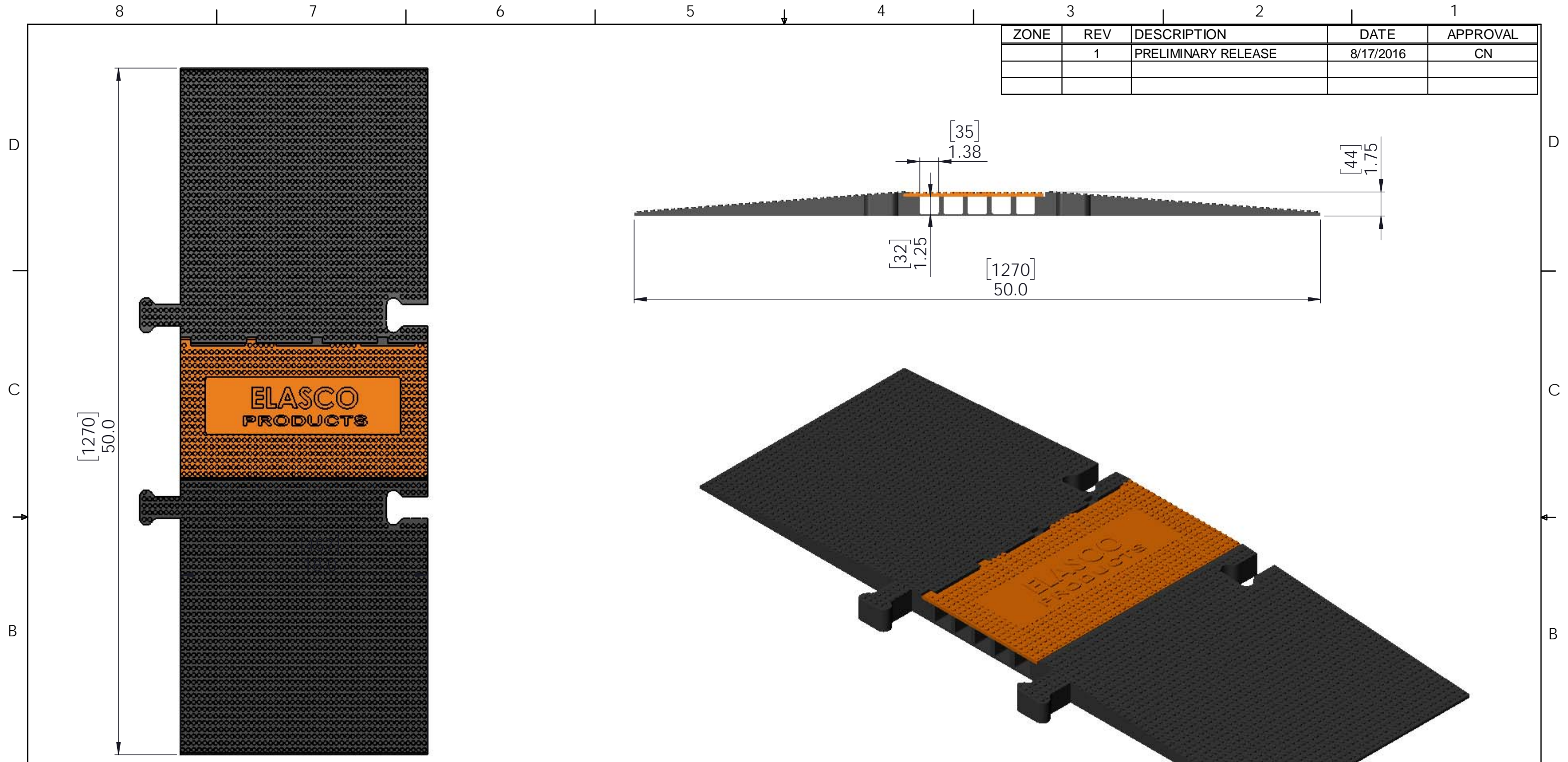


ZONE	REV	DESCRIPTION	DATE	APPROVAL
	1	PRELIMINARY RELEASE	8/17/2016	CN



**Technical Data Sheet**

DESCRIPTION	IMPERIAL	METRIC
Product Length x Width x Height	50" x 18" x 1.75"	1270mm x 457mm x 44mm
Channel Size	1.38" x 1.25"H"	35mm x 32 mm
Product Weight	XXX.0 lbs	XXX.9 kg
Load Capacity (per/axle)	20,000 lbs / tire	9071 kg
Operating Temperature	-20°F up to +140°F	-30°C up to +60°C

Standard Colors - Black/Orange (Contact for Custom Color options)  
 Durometer – 90 Shore A Base / 55 Shore D Lid +/-5  
 Material – Polyurethane  
 Manufactured in USA

<b>PROPRIETARY AND CONFIDENTIAL</b> THE INFORMATION CONTAINED IN THIS DRAWING IS THE SOLE PROPERTY OF THE ESAC. ANY REPRODUCTION IN PART OR AS A WHOLE WITHOUT THE WRITTEN PERMISSION OF THE ELASCO IS PROHIBITED.	UNLESS OTHERWISE SPECIFIED: DIMENSIONS ARE IN INCHES TOLERANCES: FRACTIONAL: ± 1/32 ANGULAR: MACH ± 1° BEND ± 1° X = ± .1 XX = ± .01 XXX = ± .005	<b>Elasco Products, LLC</b> 18065 Redondo Circle Huntington Beach, CA 92648	
	UNLESS OTHERWISE SPECIFIED DIMENSIONS AND TOLERANCES PER ASME Y14.5M	DRAWN: CN 8/16/2016 CHECKED: APPROVED: ELECTRONIC SIGNATURE ON FILE	TITLE: Five Channel UG Series

ZONE	REV	DESCRIPTION	DATE	APPROVAL
	-	See Sheet One		



<b>MIGHTYGUARD COLLECTION</b>		
<b>UG5140-ADA</b>		

**Technical Data Sheet**

DESCRIPTION	IMPERIAL	METRIC
Product Length x Width x Height	50" x 18" x 1.75"	1270mm x 457mm x 44mm
Channel Size	1.38" x 1.25"H"	35mm x 32 mm
Product Weight	XXX.0 lbs	XXX.9 kg
Load Capacity (per/axle)	20,000 lbs / tire	9071 kg
Operating Temperature	-20°F up to +140°F	-30°C up to +60°C

**Standard Colors - Black/Orange (Contact for Custom Color options)**

**Durometer – 90 Shore A Base / 55 Shore D Lid +/-5**

**Material – Polyurethane**

**Manufactured in USA**

Tips:

- Designed and rated for use on firm and level ground.
- Cable Protectors should be connected female side over male side.
- Lid should be pushed shut and flush with base of product.
- For one-way traffic, hinge should be on traffic side.

<b>Elasco Products, LLC</b> 18065 Redondo Circle Huntington Beach, CA 92648		
SIZE <b>B</b>	DWG. NO. UG5140	REV 1
SCALE: 1:6		SHEET 2 OF 2